



Drobo 5D3

Lightning Fast Storage for Your Creative Workflow

The Drobo 5D3 is the 3rd generation 5 Bay Direct Attached Storage reimagined for media professionals, content creators, and small businesses. Lightning fast Thunderbolt™ 3 technology delivers the speed, and Drobo's fully automated BeyondRAID™ functionality provides the simplicity for the best storage experience on the planet.

The 5D3 is easy to use, expandable, flexible and protected – exactly what you would expect from a Drobo. You can safely edit, store and view photos and videos for your 4K/5K workflows, as well as back up your personal and business data.

Data Protection and Expandability Made Simple

Built on award-winning BeyondRAID™ technology with single- or dual-drive redundancy, Drobo 5D3 protects your data without any user interaction, even in the event of multiple drive failures.

Drives can be added or hot-swapped and updated in real time for storage expansion with zero downtime. If you're running low on space, the lights on the front tell you what to do. Just add a drive in an empty bay or remove a smaller drive and replace it with a larger one.

Power of Thunderbolt 3 and Flexibility of USB Type-C

Thunderbolt 3 technology provides performance that's twice as fast as the previous generation, Drobo 5D. This optimizes your performance when transferring large volumes of data.

Drobo 5D3 is equipped with dual Thunderbolt 3 ports for daisy chaining. Connect up to six Thunderbolt devices and/or a non-Thunderbolt monitor at the end of the chain. Supports one 5K monitor display or two 4K monitors. By having 5D3 arrays in a chain, you can have up to 300

TB of usable capacity and achieve throughput by enabling the performance of Thunderbolt 3.

Drobo is the only 5 bay direct attached storage array that offers Thunderbolt 3 and USB 3.0 Type-C. This latest generation also offers high-performance connectivity and is backward compatible with any computer running supported versions of Mac OS X or Windows.

Enhanced Time Machine Support

Drobo is compatible with Apple's Time Machine, which will consume the capacity of an external storage system. By utilizing the Drobo Dashboard, you can simply allocate capacity limits for backups and data storage.

Capacity AND Performance

Drobo 5D3 includes a built-in Accelerator Bay, with an mSATA card holder (mSATA card not included). Our patented Accelerator Cache technology keeps a copy of your most frequently accessed data to deliver blazing-fast speeds. The accelerator cache can dramatically speed up loading large photo libraries and other I/O intensive operations, smoothing out workflows allowing you to optimize productivity.

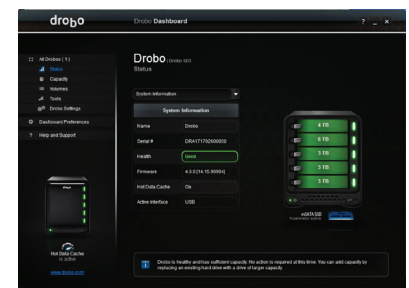
Power Protecting Your Critical Data

Drobo doesn't just protect you from a drive failure, but also from potential data loss after a power outage. Often found only in arrays that cost tens of thousands of dollars, Drobo 5D3 includes a battery that protects all data in memory, or cache, that is, data on its way to the drives.

During a sudden power loss, the internal battery keeps the Drobo alive long enough for the data to be written to nonvolatile storage. The battery recharges itself and lasts for the life of the product.

Drobo Dashboard

Drobo Dashboard is the single tool used to centrally manage all of your Drobo devices. Drobo Dashboard displays status as if all of your Drobos were right in front of you with the same status lights and capacity gauge that are on the front panel. All administration tasks are a single click away.



Designed for You

Drobo devices have always been space efficient and the Drobo 5D3 is no exception. It is designed to provide high capacity, without taking up a lot of your valuable desk space. It is compact because of Drobo's unique carrier-less drive bay design, allowing drives to be installed very close to each other. Includes Thunderbolt 3 cable.

*Laptops and computers with Thunderbolt 2 ports will require a Thunderbolt 3 (USB-C) to Thunderbolt 2 adapter.



Specifications

Connectivity	<ul style="list-style-type: none"> – 2 x Thunderbolt 3 ports; second port for daisy chaining Thunderbolt devices, including one 5K or two 4K displays (Mac OS X only) – 1 x USB 3.0 Type-C port 	Hardware Features	<ul style="list-style-type: none"> – Carrier-less drive bays – Power fail protection with internal battery – Metal chassis and cover – Kensington Lock Port for security (lock not included)
Drives and Expansion	<ul style="list-style-type: none"> – Up to five (5) 3.5" SATA II/III hard disk drives or solid state drives (sold separately) – One (1) mSATA solid state drive in the Drobo Accelerator Bay for increased performance (sold separately) – Drives of any manufacturer, capacity, spindle speed and/or cache can be used. No carriers or tools required – Expandable by adding drives or hot-swapping drives with larger ones. 	Additional Software Features	<ul style="list-style-type: none"> – Hot Data Caching – Drive Spin Down – Dim Lights – OS X Time Machine Support – Windows Backup Support
BeyondRAID Features	<ul style="list-style-type: none"> – Thin Provisioning – Instant Expansion – Mixed Drive Size Utilization – Automatic Protection Levels – Single or Dual Disk Redundancy – Virtual Hot Spare – Data Aware – Drive Re-ordering 	Warranty	<ul style="list-style-type: none"> – Two (2) year warranty
Management	<ul style="list-style-type: none"> – Drive bay indicator lights, capacity gauge, status lights – Drobo Dashboard version 3.1.1 or later 	Size and Weight	<ul style="list-style-type: none"> – Desktop Form Factor – Width: 5.9 in (150.3 mm) – Height: 7.3 in (185.4 mm) – Depth: 10.3 in (262.3 mm) – Weight: 8.5 lb (3.9 kg) without hard drives, power supply or packaging
Operating System Support	<ul style="list-style-type: none"> – Apple® macOS X 10.12 and higher – Microsoft® Windows® 10 – Microsoft® Windows® 8 	Power and Cooling	<ul style="list-style-type: none"> – External Power Supply: <ul style="list-style-type: none"> • AC Input – 100-240VAC~2A, 50-60Hz • DC Output – 12V, 10A, 120W max – Fixed, 120mm variable speed cooling fan – 15W of power to slow charge a Thunderbolt 3 laptop
File Systems Supported	<ul style="list-style-type: none"> – Mac OS X: HFS+ – Windows: NTFS 	Box Contents	<ul style="list-style-type: none"> – Drobo 5D3 – 3.3 ft (1 m) Thunderbolt 3 cable (20 Gb/s) – 6 ft (1.8 m) power cord with power supply – Quick Start Card

How to Choose the Right Drive

Drobo gives you the flexibility to use a wide variety of drive types and capacities. To find out which drive is right, visit www.drobo.com/products/choose-drive.

More Information

For more on Drobo's innovative technology, visit www.drobo.com/how-it-works.

Read about Drobo BeyondRAID at www.drobo.com/how-it-works/beyond-raid.

For more resources, visit <http://www.drobo.com/drobo-resources/#testimonials>

Visit the Thunderbolt technology site to learn more about this exciting new way to connect devices at <https://thunderboltechnology.net>.

Thunderbolt and the Thunderbolt logo are trademarks of Intel Corporation or its subsidiaries in the U.S. and/or other countries.



1289 Anvilwood Ave, Sunnyvale, CA. 94089
www.drobo.com • +1.408.454.4200